

USE OF CLASS “A” BURN FACILITY

A floor plan of the facility is included here also to help you to determine your action plan for your drill. The facility is suitable for hose advancement and extinguishment, search and rescue, VES, below-grade RIC operations, laddering, basement and aerial operations. As we grow with the facility we anticipate that it will also be a valuable tool for smoke-only evolutions to facilitate search and rescue as well as RIC and Safety & Survival techniques.

COSTS

Three (3) Hour Drill Session – Three (3) Burns.....	\$100.00 (In-County) \$700.00 (Out-Of-County)
Five (5) Hour Drill Session – Five (5) Burns.....	\$250.00 (In-County) \$1150.00 (Out-Of-County)

SCHEDULING

In order to make the scheduling process equitable, and to give all Morris County departments a chance to drill in the Class A facility the following processes will be used. Departments are encouraged to submit drill dates as soon as possible. ***Application can be found on pages 65 & 66.***

January 1, 2016 – January 31, 2017.....	One (1) Drill Pick (In-County)
February 1, 2016 – February 29, 2017.....	One (1) Additional Drill Pick (In-County)
March 1, 2016 – March 31, 2017.....	Three (3) Additional Drill Picks (In-County) One (1) Drill Pick (Out-Of-County)
After April 1, 2017.....	Unlimited picks In and Out-Of-County

- All drills will be filled on a first-come first-served basis.

All drills will be confirmed using our online calendar “Fire Training Grounds Calendar”. <https://www.trumba.com/calendars/morris-county-public-safety-training-academy>

Class ‘A’ burns will occur in any one of the three burn areas during any evolution.

There will be no allowances made to conduct burns in two areas at the same time.

NO ONE UNDER THE AGE OF EIGHTEEN (18) WILL BE PERMITTED IN THE FACILITY AT ANY TIME DURING A DRILL.

The facility is suitable for hose advancement and extinguishment, search and rescue, VES, below-grade RIC operations, laddering, basement and aerial operations.

All PPE must be appropriate and in good serviceable condition. The final determination of acceptable PPE will be made by the Academy Staff at the time of the drill.

Modifications to any element of the PPE ensemble will not be permitted, this includes but is not limited to any modifications to a helmet which deviate from the original design and manufacture of the helmet.

Excessive adornments to helmets will be strictly prohibited.

BURN RULES – continued

All PEOSHA guidelines will be strictly adhered to including but not limited to facial hair. No hair will be permitted in the form of sideburns that extend below the corner of the ear, or a moustache that extends beyond the corners of the mouth, nor will any hair in the form of a goatee of any growth below the plane of the mouth be permitted.

All members participating in drills MUST have been OSHA Respiratory Cleared and within a current Fit-Test cycle. The Officer-In-Charge of a department will sign-off attesting to these facts and the department will assume and retain all liabilities related to these matters.

Only station wear (Homex/PBI) or cotton clothing will be worn inside the Class A structure. **NO SHORTS** of any kind will be worn, only **LONG PANTS**. **NO SYNTHETIC APPAREL** of any type will be worn.

Prior to **EVERY DRILL** all members participating in Class A drills will be required to view a short safety / orientation video prior to the start of the drill *as well as* a facility walk-through. Any member who does not attend both will not be permitted to participate in that night's drill.

Damage to PPE is possible during evolutions based on the nature of the training. The Academy shall not be held responsible for damage to any element of PPE. Departments are encouraged to bring with them any device such as aluminized helmet covers to prevent damage to helmets.

Departments are expected to clean up after drills and to return the facility to the condition that it was found.

REQUIREMENTS

Materials:

For a **three hour** drill a department must bring with them, or arrange to have delivered for them no less than two hours before training:

- Twenty Four (24) **DRY** 7/16" OSB, 4' x 8' Sheets
- Twelve (12) **DRY** 2" x 4" x 8' Stud Grade

For a **five hour** drill a department must bring with them, or arrange to have delivered for them no less than two hours before training:

- Forty (40) **DRY** 7/16" OSB, 4' x 8' Sheets
- Twenty (20) **DRY** 2" x 4" x 8' Stud Grade

Emergency Medical Services:

- One (1) Basic Life Support Ambulance – Staffed
- Sufficient water or suitable hydration supplies for all participating members

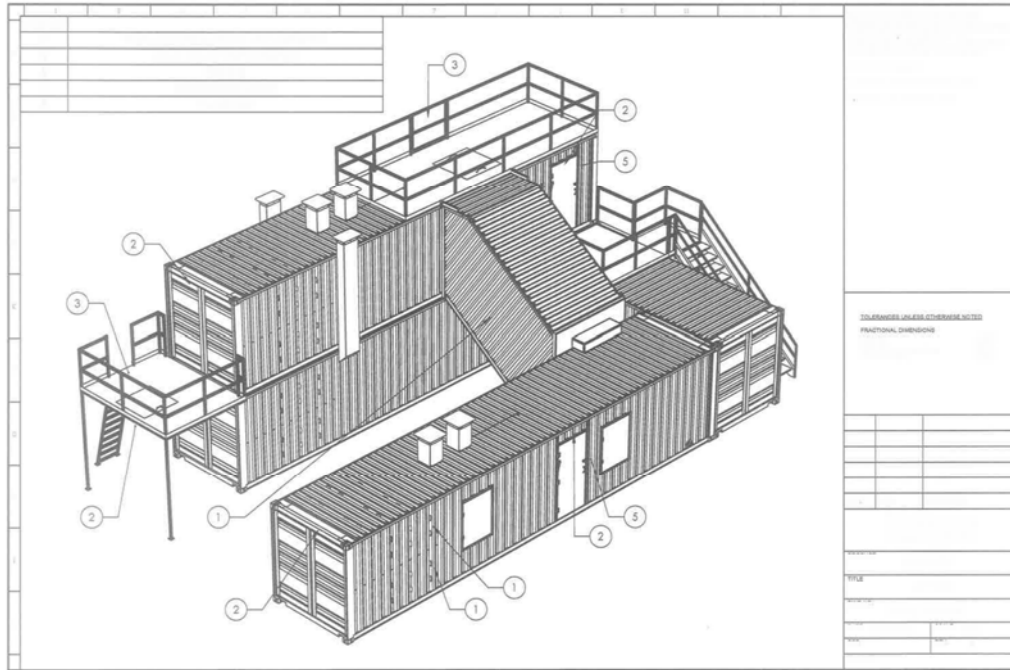
DRILL TIMES AND AVAILABLE DATES

Weeknight Drills will be from 19:00 – 22:00 and will consist of up to three (3) burns

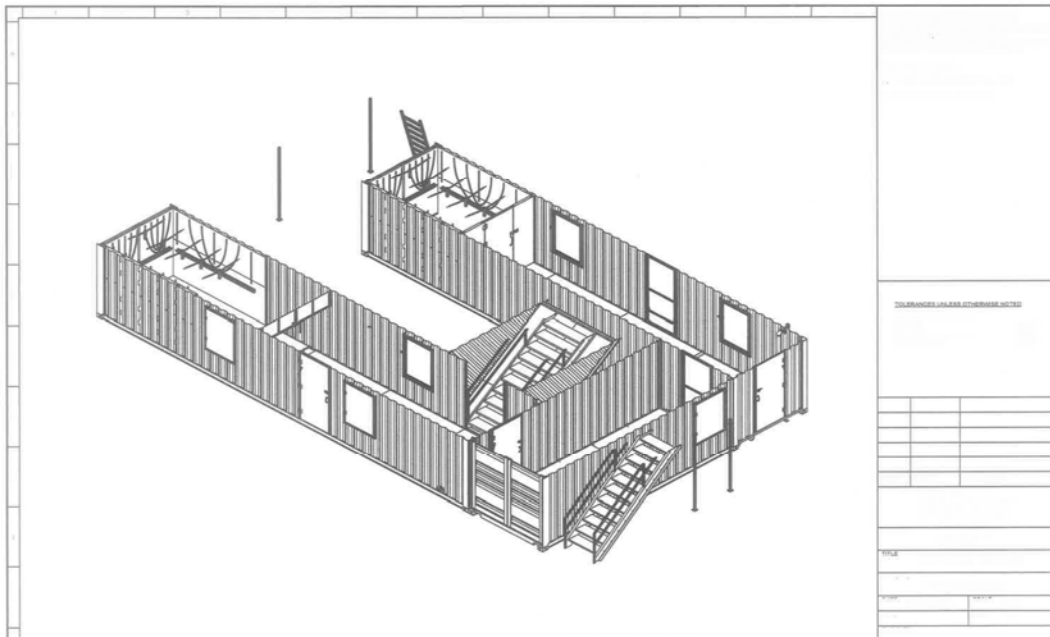
Weekend Drills will be either a partial day 09:00 – 12:00 and will consist of up to three (3) burns, or a full day 09:00 – 14:00 which will consist of up to five (5) burns.

2017 Available Dates for Class "A" Burn Facility

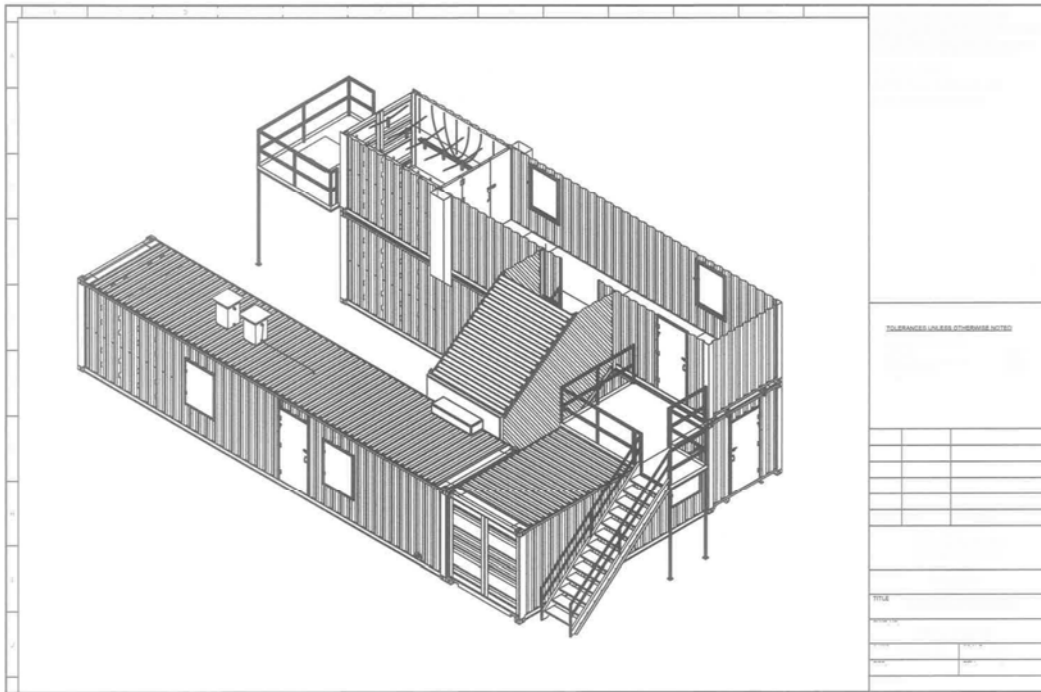
April 1	April 13	April 23	
April 4	April 17	April 26	
April 10	April 20	April 29	
May 2	May 11	May 18	May 30
May 5	May 13	May 21	
May 8	May 15	May 24	
June 2	June 11	June 20	June 29
June 5	June 14	June 23	
June 8	June 17	June 26	
July 2	July 11	July 20	July 29
July 5	July 14	July 23	
July 8	July 17	July 26	
August 1	August 10	August 19	August 28
August 4	August 13	August 22	August 31
August 7	August 16	August 25	
September 5	September 14	September 24	
September 8	September 19	September 27	
September 11	September 22	September 30	
October 3	October 11	October 23	
October 6	October 14	October 26	
October 8	October 17	October 29	
November 1	November 10	November 19	November 30
November 4	November 13	November 22	
November 7	November 16	November 27	



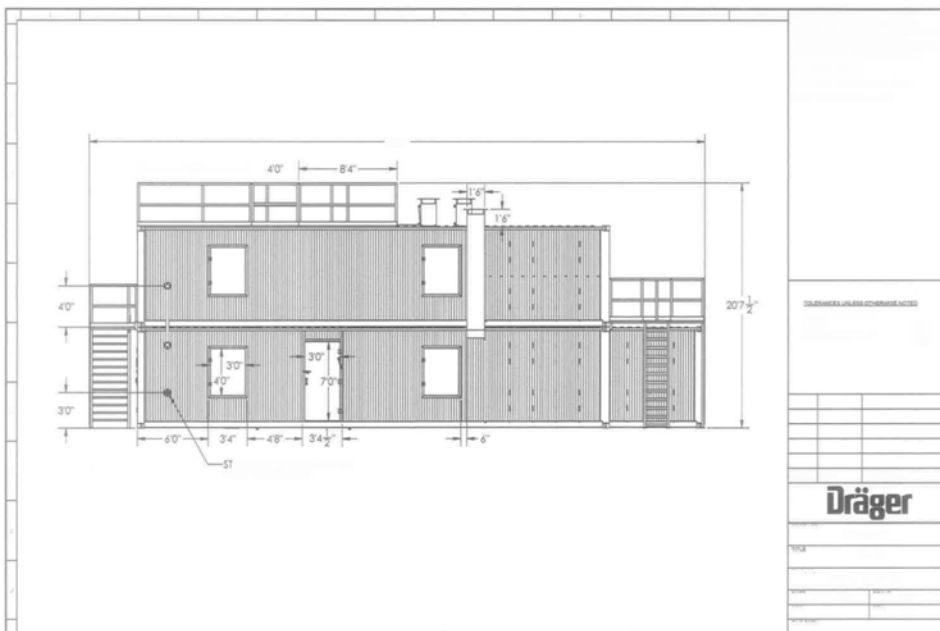
C/D Corner



B/C Corner View of 1st Floor Burn Rooms



B/C Corner View of 2nd Floor Burn Room



Side 'A'

